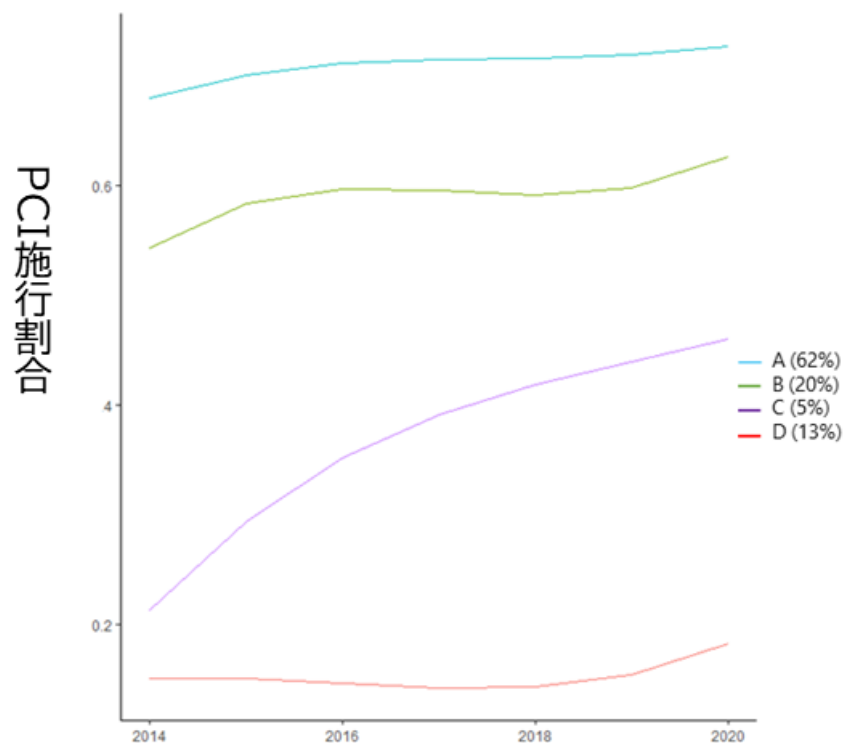
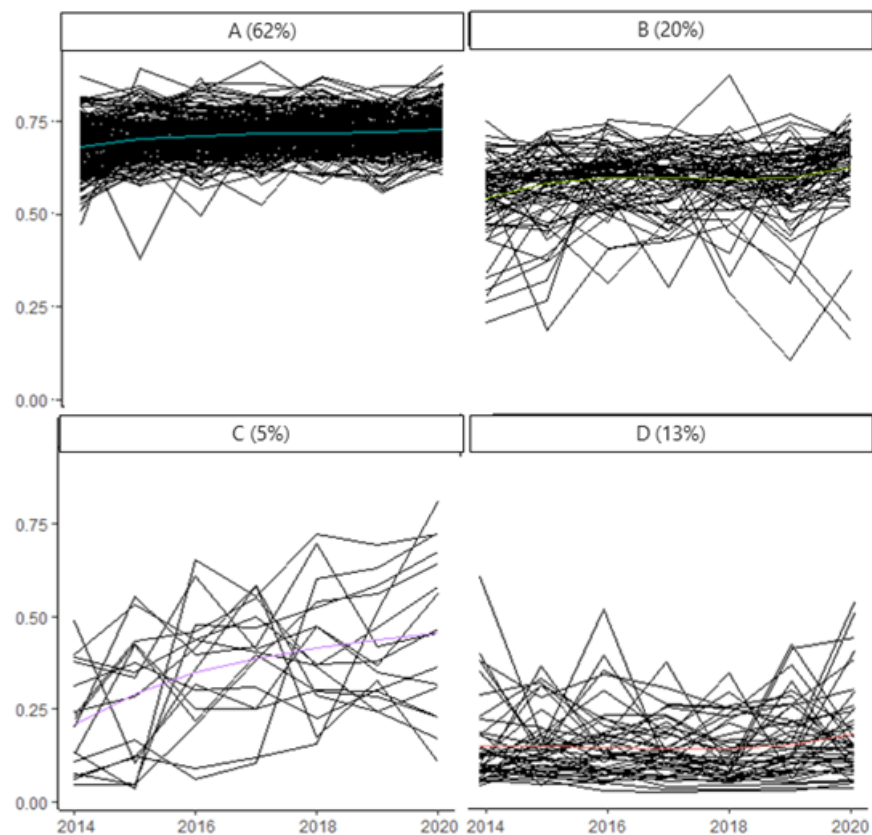


335二次医療圏のPCI施行割合の経時的推移



各二次医療圏のPCI施行割合の軌跡から4つのグループに分類



Itoshima H, Shin J, Sasaki N, Goto E, Kunisawa S, Imanaka Y. Regional variations in primary percutaneous coronary intervention for acute myocardial infarction patients: A trajectory analysis using the national claims database in Japan. *PLoS ONE*. 2024. (accepted)