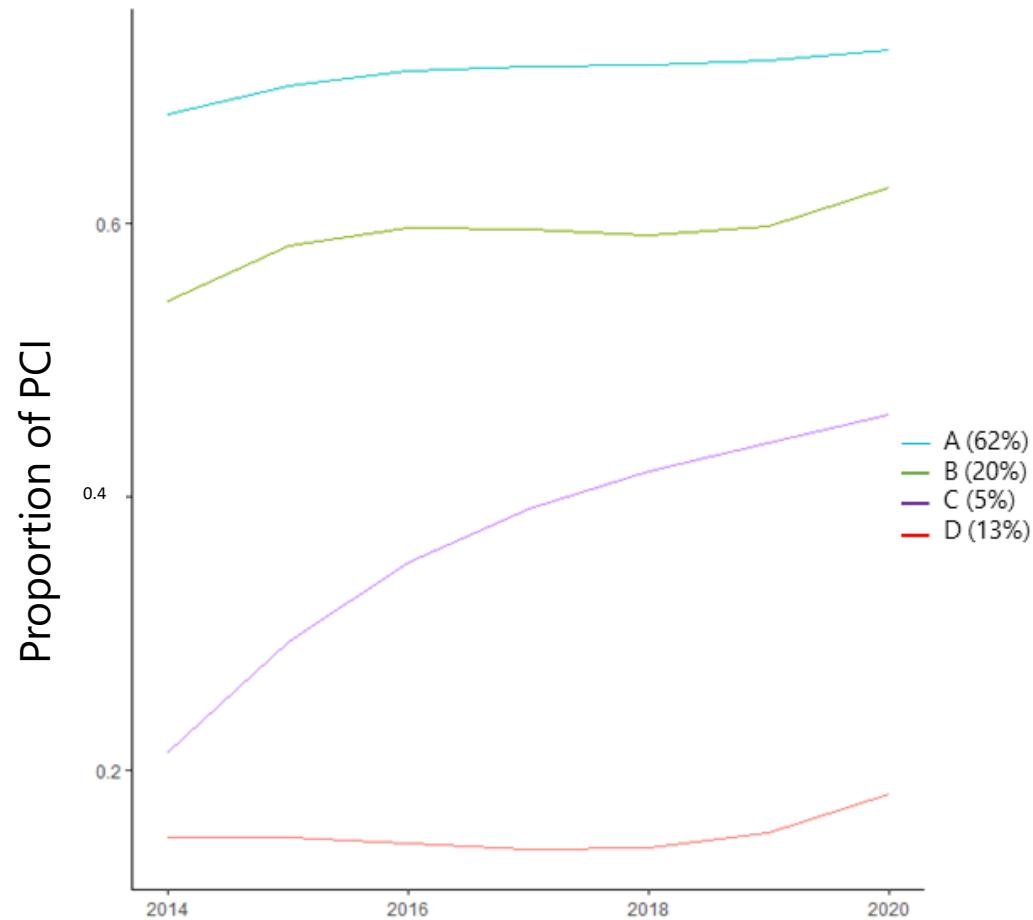
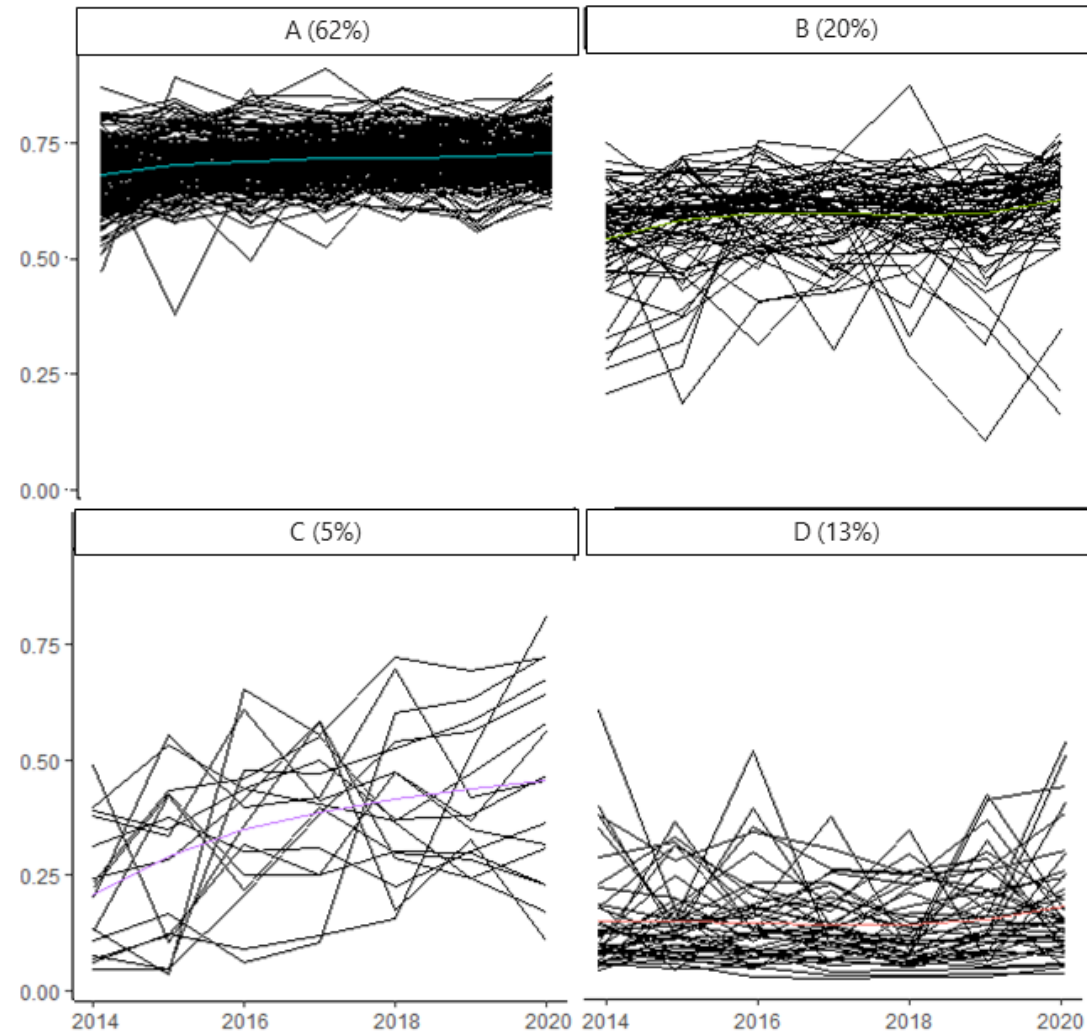


# The trend of proportion of PCI for acute myocardial infarction in 335 secondary care areas



The 335 secondary medical areas (SMAs) were classified into four groups: group A had 208 SMAs (62.0%), group B had 68 SMAs (20.0%), group C had 16 SMAs (5.0%), and group D had 43 SMAs (13.0%).



Itoshima H, Shin J, Sasaki N, Goto E, Kunisawa S, Imanaka Y. Regional variations in primary percutaneous coronary intervention for acute myocardial infarction patients: A trajectory analysis using the national claims database in Japan. *PLoS ONE*. 2024; 19(10): e0312248.