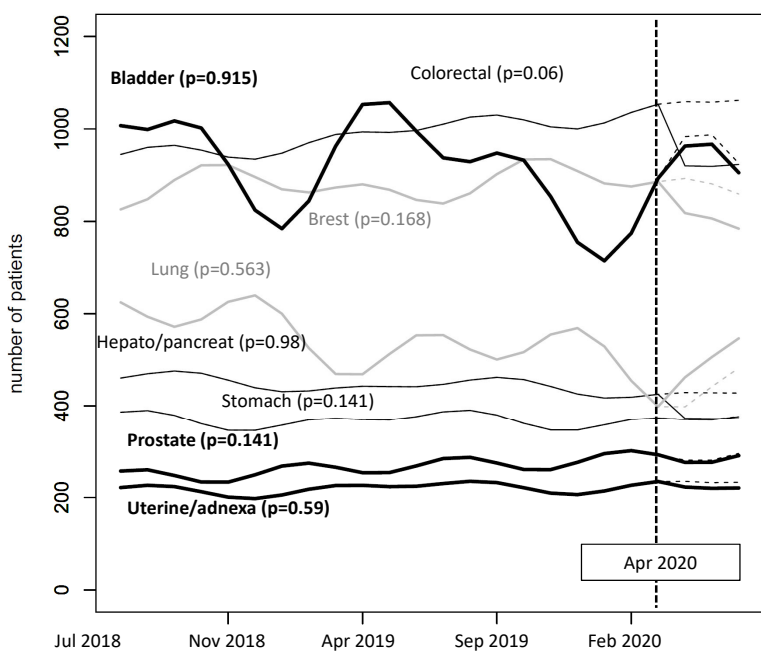


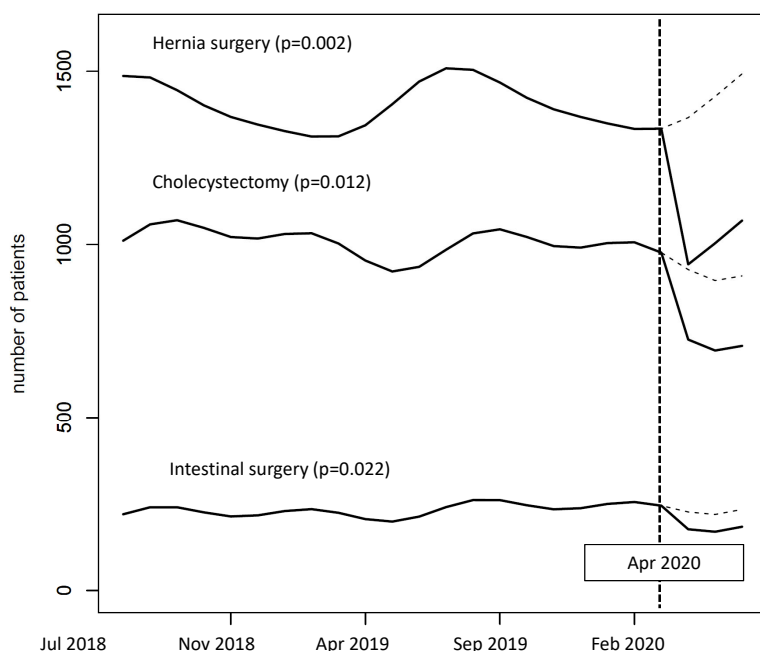
We identified the impact on surgical volume reduction of the announcement of surgical triage by the Japanese surgical society during the 1st wave of the COVID-19 pandemic. Between July 1, 2018 and June 30, 2020, 490,719 patients who underwent major surgery with a scheduled admission were selected and categorized into 8 groups. interrupted time series analysis showed that Non-critical surgeries showed obvious and statistically significant declines in case volume during the pandemic.

Surgery Today 2021 21:1–8 ; DOI: 10.1007/s00595-021-02286-6

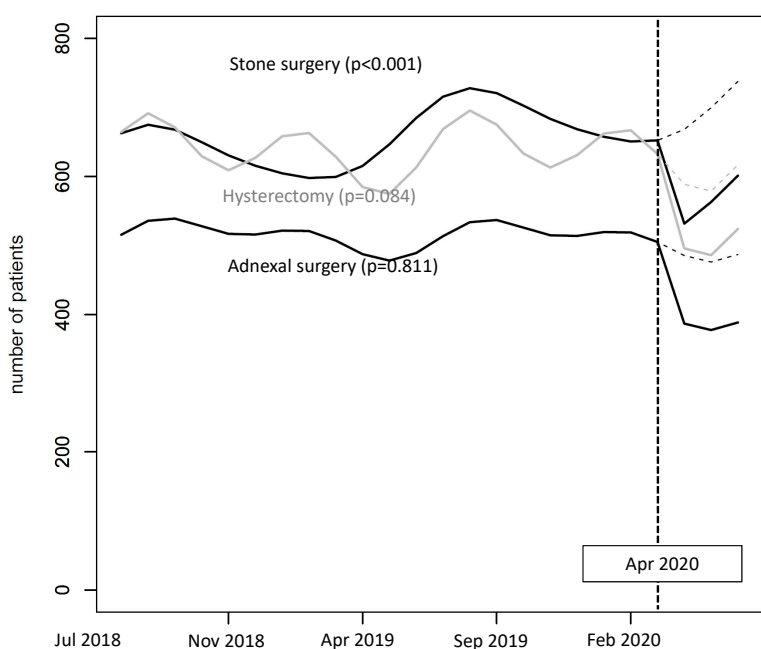
Oncological



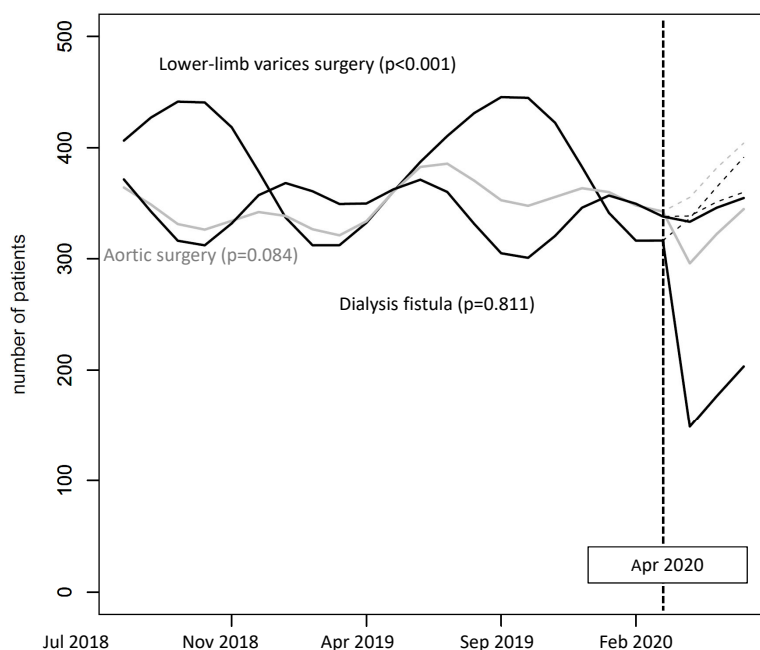
Abdominal



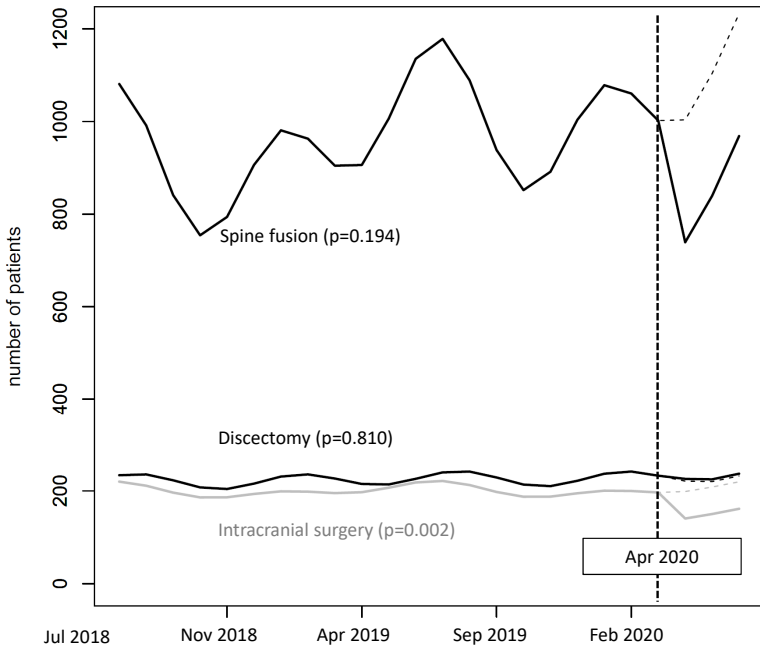
Genitourinary



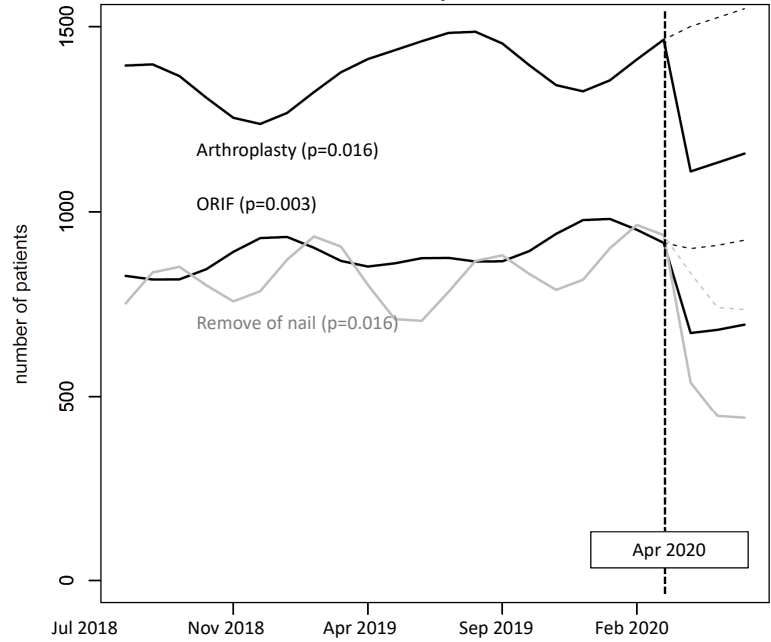
Cardiovascular



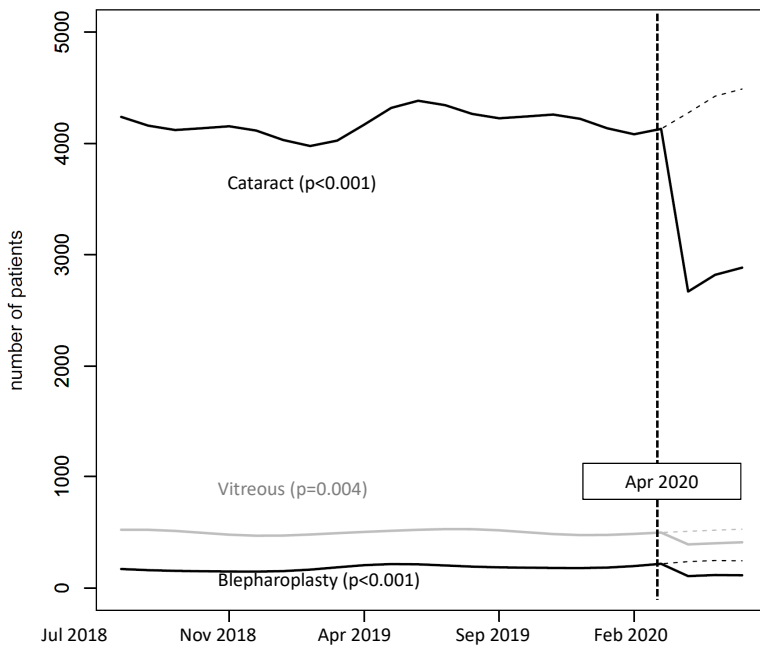
Neuro



Orthopedic



Ophthalmology



Ear/Nose/Throat

