

## 【Title】

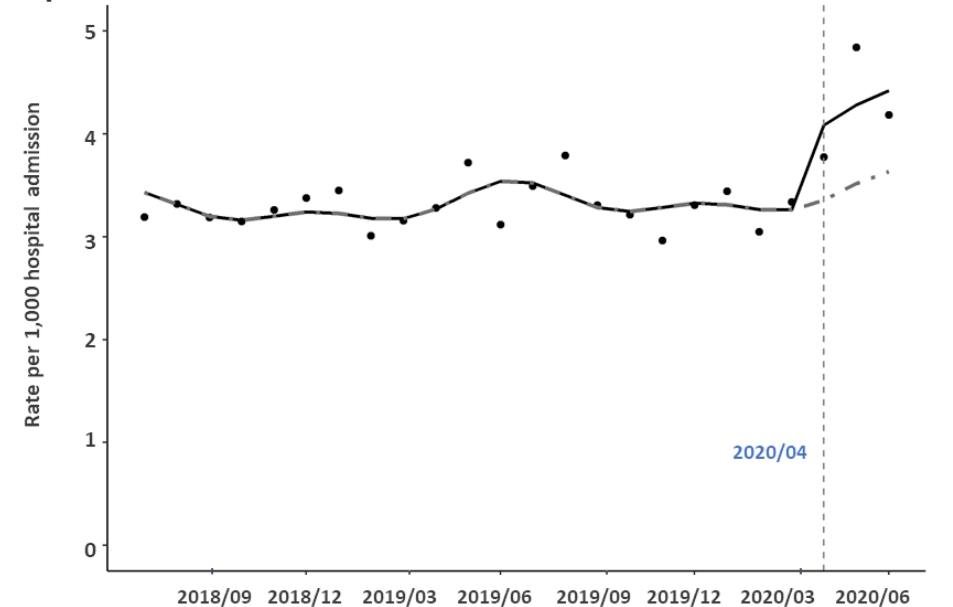
Itoshima H, Shin JH, Takada D, Morishita T, Kunisawa S, Imanaka Y.

The impact of the COVID-19 epidemic on hospital admissions for alcohol-related liver disease and pancreatitis in Japan. *Sci Rep.* 2021;11(1):14054. Published 2021 Jul 12. doi:10.1038/s41598-021-92612-2

## 【Abstract】

- We found that the rate of admissions per 1,000 admissions during the COVID-19 epidemic period (April 2020 to June 2020) was 1.2 times compared to the pre-epidemic period (July 2018 to March 2020) by using QIP project database.
- Analyses stratified by sex revealed that the increases in admission rates of alcohol-related liver disease or pancreatitis for females were higher than for males during the COVID-19 epidemic period.
- During the COVID-19 epidemic, we should pay attention to the problem of harmful alcohol consumption.

**Figure 1. Hospital admissions for alcohol-related liver disease or pancreatitis**



Solid Line: Fitting our model based on our data

Dash Line: Predict (Counterfactual scenario; if the epidemic did not occur)