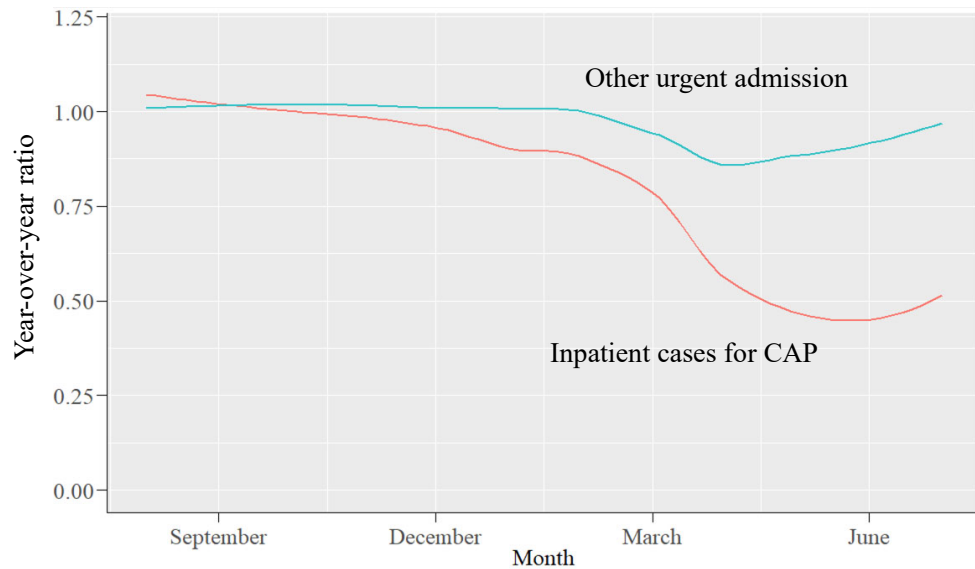


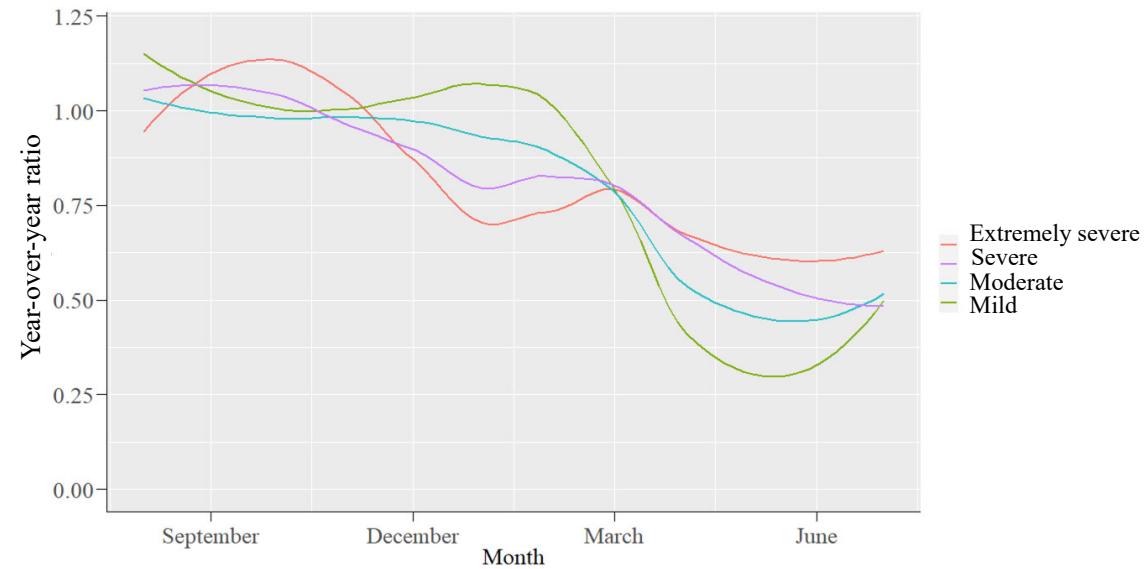
The impact of the COVID-19 pandemic on inpatient cases of community-acquired pneumonia (CAP)

International Journal of Infectious Diseases 2021 May; 106: 323–328.

Based on administrative claims data, we evaluated the impact of the COVID-19 pandemic on the number and severity of inpatients for CAP in Japan.



During the COVID-19 pandemic (between March and July 2020), the number of inpatient cases for CAP drastically decreased during the epidemic compared with the same period in the past year (-45.2%), despite only a temporary reduction in the number of other urgent admissions.



According to the severity score “A-DROP”, milder cases showed a greater decrease in the year-over-year ratio than severe ones (mild -55.2%, moderate -45.8%, severe -39.4%, and extremely severe -33.2%).