

健康危機管理システム学分野

Department of Health Security System

今中雄一 教授 Yuichi Imanaka, MD, MPH, PhD

Centre for Health Security URL : <https://www.chs.med.kyoto-u.ac.jp/>

Centre for Health Security E-Mail : chs@umin.ac.jp

●ミッション

当分野は、自然災害、大事故災害、感染症流行、静かに迫る社会基盤脆弱化など、様々な危機事象に対し人々の健康を守るために○健康危機に対する準備・予防、対応、復旧、復興のシステム、および○健康危機に対する社会・地域や組織のレジリエンスの向上を目指す。

国内外の実践・政策等の有力機関・有力者と交流・協働を強化し、健康危機対応力と社会のレジリエンスのための研究・開発、人材育成、実践・社会づくりに取り組む。

Mission Statement

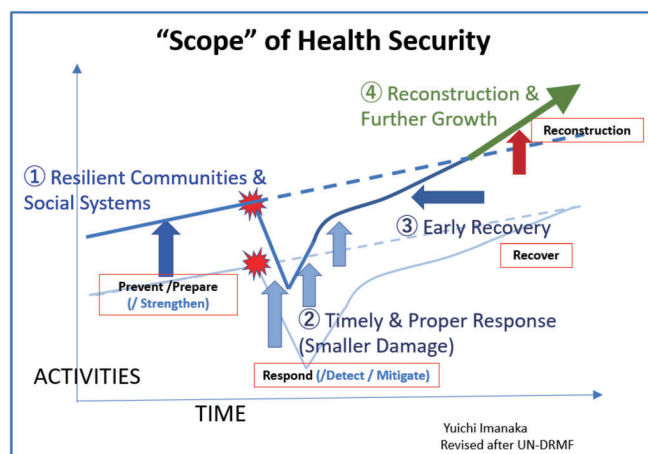
We aim to protect and secure people's health against various crises, including natural disasters, major accidents, infectious disease outbreaks, and the silent deterioration of social infrastructure in the era of depopulation and climate change.

Our efforts focus on:

To improve systems for preparedness, prevention, response, recovery, and reconstruction in the face of health crises.

To enhance the resilience of society, communities, and organizations to health crises.

By strengthening international and domestic collaboration with stakeholders and key organizations/figures, we **advance research, human resource development, policy engagement, and practical initiatives** to improve preparedness, response, and societal resilience against health crises.



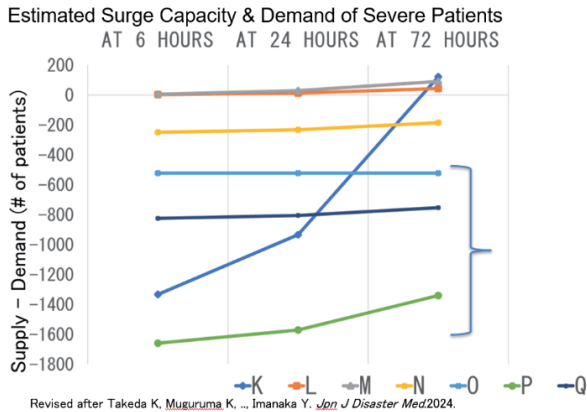
[Example Outputs for Health Security]

- Takeda K, Muguruma K, Maki N, Ohtsuru S, Imanaka Y. Estimation of **surge capacity during earthquake disasters and business continuity plans** in disaster base hospitals for disaster management. Japanese Journal of Disaster Medicine 2024; 29(1): 23-31.
- Khatoun A, Sasaki N, Kunisawa S, Fushimi K, Imanaka Y. **Benchmarking broad-spectrum antibiotic use** in older adult pneumonia inpatients: A risk-adjusted smoothed observed-to-expected ratio approach. Infection Control &

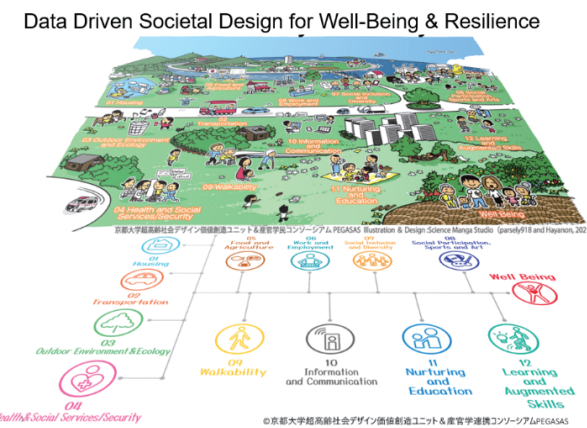
Hospital Epidemiology 2025 (accepted)

- Taira K, Shiomi M, Nakabe T, Imanaka Y. The association between **COVID-19 vaccination uptake and information-seeking behaviors** using the Internet: nationwide cross-sectional study. Journal of Medical Internet Research 2025 Jan 14; 27:e59352.
- Kishimoto K, Kunisawa S, Fushimi K, Imanaka Y. **Effects of rotavirus vaccine coverage** among infants on hospital admission for gastroenteritis across all age groups in Japan in 2011-2019. Emerging Infectious Diseases 2024 Sep; 30(9):1895-1902.
- Sasaki N, Rosenberg M, Shin J, Kunisawa S, Imanaka Y. **Hidden populations for healthcare financial protection** in the super-aging society: Closing the gap between policy and practice. Clinical Social Work Journal 2024 (Published: 16 January 2024).
- Yoshigai M, Shin J, Nagano H, Nakabe T, Imanaka Y, KU Task Force to Create Resilient Societies with and after COVID-19. **Presenteeism and social interaction** in the "new normal" in Japan: a longitudinal questionnaire study. Environmental Health and Preventive Medicine 2024; 29:3.
- Itoshima H, Shin J, Sasaki N, Goto E, Kunisawa S, Imanaka Y. **Regional variations** in primary percutaneous coronary intervention for acute myocardial infarction patients: A trajectory analysis using the national claims database in Japan. PLoS ONE 19(10): e0312248
- Minato K, Shin J, Kunisawa S, Fushimi K, Imanaka Y. The total number of patients with any of four major **fragility fractures** decreased during the first wave of the COVID-19 epidemic in Japan, commencing before the state of emergency declaration, which was not as enforceable as lockdown. Archives of Osteoporosis 2023 Jun 21;18(1):86
- Higuchi T, Shin J, Takada D, Morishita T, Kunisawa S, Imanaka Y. The Japanese **Guide affected the prescription of steroids for COVID 19** inpatients during the COVID 19 epidemic in Japan. Scientific Reports 2023 Jun 3;13(1):9041.
- Yoshikawa M, Goto E, Shin J, Imanaka Y. **Regional disparities** in dementia-free life expectancy in Japan. PLoS ONE 2023;18(5):e0280299.
- Nagano H, Shin J, Kunisawa S, Fushimi K, Nagao M, Imanaka Y. **Impact of the cefazolin shortage** on the selection and cost of parenteral antibiotics during the supply disruption period in Japan: A controlled interrupted time series analysis. Journal of Infection and Public Health 2023 Mar;16(3):467-473.
- 2022年度厚生労働科研費報告 日本医学会連合門田班 社会医学グループ「COVID-19諸施策フレームワークの構築：危機管理とポストコロナ時代を見据えて」(分担班代表今中)
- [CHS協働]健康危機への備えと対応：パンデミックと能登半島地震を踏まえた社会とシステムのあり方. 医学のあゆみ. 特集号 第293巻1号 (2025/4/5). 医歯薬出版

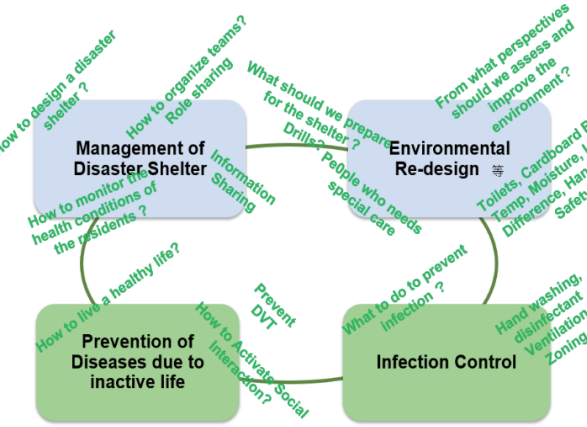
[Research Examples]



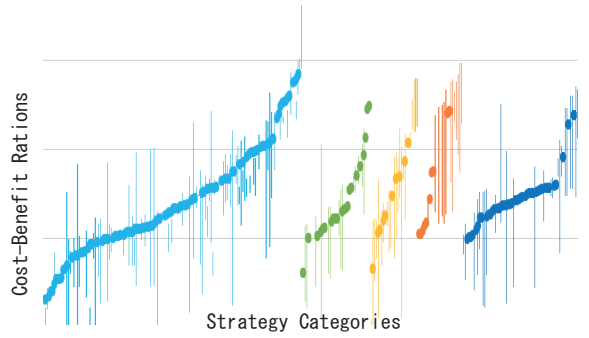
BCP/BCM (Business Continuity Plan & Management) for Health Security against Crises
Surge Capacity Management
 事業継続計画・事業継続マネジメント
 サージキャパシティ・マネジメント



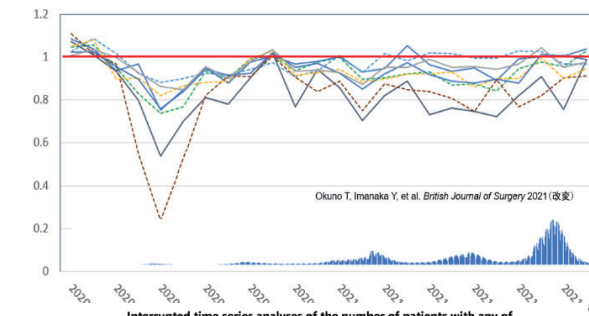
Data-Driven Design to Enhance the Resilience and Well-Being of People and Communities 産官学民連携による人々の健康・ウェルビーイングとレジリエンスを高める社会づくり



To Improve Disaster Shelter Life
 災害避難生活の改善:パブリックヘルスアプローチの強化と多分野協働



Return on Investment for Disaster/Health Crisis Management 健康危機管理への投資効果、費用対便益に関する研究



Impact Assessment of Pandemic/Disasters on Healthcare Systems & Framework for Comprehensive Measures against Crises
 健康危機の医療システムへのインパクト評価と包括的施策・政策フレームワーク開発

Mapping Resilience/Vulnerability from 'Soft' Social Infrastructure Perspectives
 全国諸地域の社会的脆弱性・レジリエンスの可視化とマッピング



Mapping Resilience/Vulnerability from 'Soft' Social Infrastructure Perspectives
 全国諸地域の社会的脆弱性・レジリエンスの可視化とマッピング